



Mirror Stainless Steel Coil

Ningbo Qihong Stainless Steel Co., Ltd. is specialized in mirror stainless steel coil for many years, we have a excellent professional team that can provide customized services for products. At the same time, We also ensure the mirror stainless steel coils' quality, and excellent Bending, Decoiling, Cutting processing technology.

Mirror stainless steel coil is polished by surface treatment of stainless steel plate or rolled by special equipment with bright process. As long as it is cold rolled, mirror surface can be polished. Generally, stainless steel plate is polished to a surface roughness below Ra0.1um, which can be said to be mirror stainless steel. Common mirror stainless steel coils are divided into three types: 6K, 8K, and 10K. Generally, it is ordinary polishing, ordinary 6K, fine grinding 8K, and super fine grinding 10K effect. Generally, there is not much difference between the same thickness, and the 10K mirror surface is brighter; the thicker the thickness, the worse the effect and the higher the processing cost.

The mirror stainless steel coils supplied by Qihong company are widely used, such as elevator panels, building materials panels, etc. It is also commonly used in interior product decoration. For example, the mirror wall in the guest room can expand the space and enhance the overall three-dimensional sense; it can also be used as a TV wall, with stainless steel decorative mirror, to double the sense of luxury; as the foot or frame of the living room coffee table, dining table, chair, etc., the mirror material reflects the surrounding environment. The scenery echoes the decoration; at the same time, it can also be used as a bathroom mirror cabinet and bathroom products. Due to the corrosion resistance of stainless steel and its own metal properties, mirror stainless steel coils bring a unique sense of beauty and fashion to the majority of users.

Product Parameter (Specification)

Material	304 316 301 310 430 201 400 420 421
Surface	6K, 8K, 10K Mirror, etc
Thickness	0.02mm-4.0mm/Customized
Length	200-3500 mm or customized according to customer requirements
Width	2-1500 mm or customized according to customer requirements
Standard	ASTM, JIS, GB, AISI, DIN, BS, EN
Certifications	SGS ISO9001
Packing	Industry standard packaging or according to client's requirement
Brand	TISCO, POSCO, BAO STEEL, TSINGSHAN, QIYI STEEL etc .
Payment terms	L/C, T/T
Delivery time	Up to order quantity, contact us to know

The production Process of Mirror Stainless Steel Coils

Mirror stainless steel coils is a bright surface effect obtained by rough grinding, medium grinding and fine grinding through polishing and grinding equipment. The specific production process of mirror stainless steel coils is as follows:

1. Abrasive parts: The main purpose of stainless steel welding parts is to remove solder joints, to achieve workpieces with a surface roughness of $R_{10\mu m}$, and to polish!

The grinding part can be summarized as three processes: rough grinding, semi-finishing and fine grinding.

First, a visual inspection is performed on the workpiece that has been transferred to the polishing process in the subsequent process. If there are defects such as missing welding, penetration, uneven depth of welding seam, excessive deviation from the joint, local depression, uneven butt joint, deep scratches, bumps, serious deformation, etc. Then the polishing process is started.

a. Coarse grinding: grind the workpiece on three sides with a 600 abrasive belt. The purpose of this process is to remove the welding spots left by the workpiece welding and the collision damage occurred in the previous process, so that the welding corners are initially formed, and there are basically no large scratches and bumps on the horizontal and vertical planes.

b. Semi-finishing: Grinding the workpiece with 800 abrasive belt, grinding the workpiece back and forth according to the following method, mainly to correct the seams of the previous process, and further fine-grinding the traces generated after rough grinding. The traces left by the subsequent process should be polished repeatedly, so that the surface of the workpiece has no scratches and is basically bright.

c. Fine grinding: The use of 1000 abrasive belt is mainly to correct the fine lines of the previous process. Grinding method is the same as above. The purpose of this process is to basically disappear the junction between the ground part and the non-grind part of the workpiece, making the surface of the workpiece brighter. The workpiece after grinding by this process should be basically close to the mirror effect.

2. Polish the stainless steel polished after the mirror surface to achieve the purpose of mirror surface.

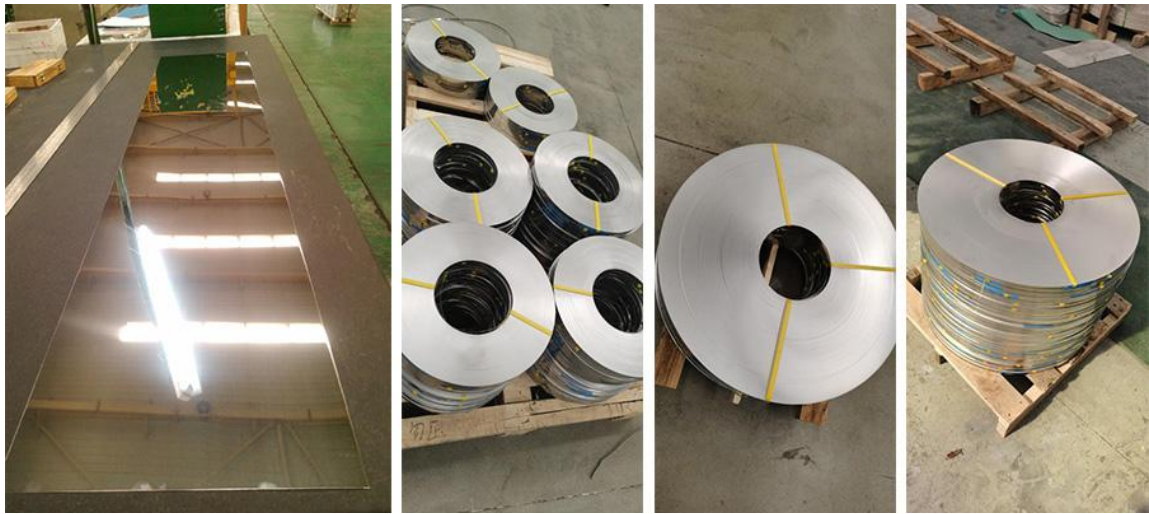
Polishing is the final process of mirror polishing. After the subsequent process is completed, wipe the surface of the workpiece with a clean cotton wheel after wiping the mirror surface, and wipe the polished workpiece. The purpose of this process is to make the surface of the workpiece indistinguishable from welding traces, and to polish the polished workpiece to make its brightness reach 8K specular reflection, and there is almost no difference between the polished part and the unpolished part. To achieve a full mirror effect.

Product Details



宁波奇鸿不锈钢有限公司
Ningbo Qihong Stainless Steel Co., Ltd

www.qhstainlesssteel.com



Tel: [+86-574-56220289](tel:+86-574-56220289)

E-mail: Tangerine615@163.com